



smart[™]

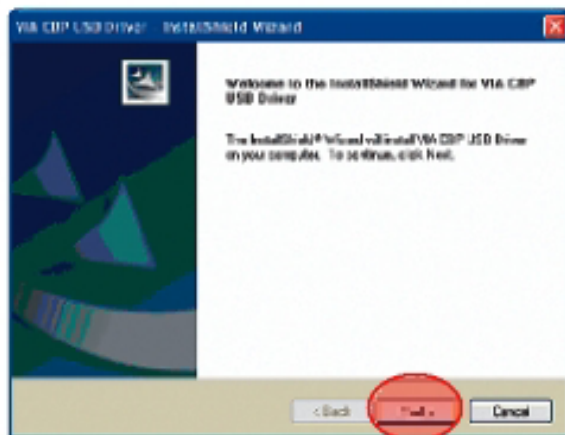
Hebat. Hemat.

Panduan Instalasi HaPe Modem Haier D1 200P

Windows 2000 & Windows XP ready
Untuk Windows Vista harap upgrade software
lewat website : www.smart-telecom.co.id

Install USB Driver

1



Saat mulai instalasi, HaPe dan kabel USB dalam kondisi **tidak terkoneksi** ke komputer

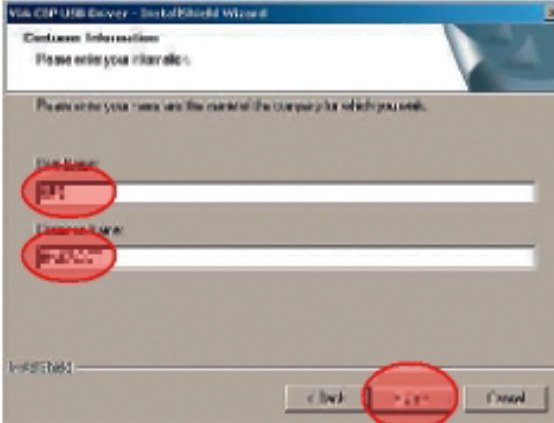
Masukkan CD Modem Driver ke CD Drive, klik ganda **viaUsb_Setup.exe** lalu klik **Next**



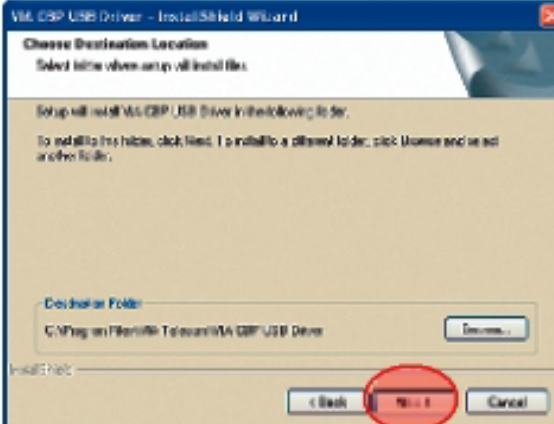
2

Muncul License Agreement, klik **Yes**

Isi informasi pribadi (User Name & Company Name),
lalu klik **Next**

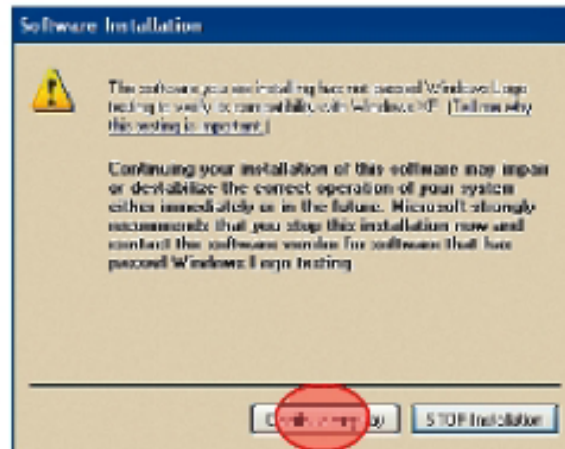


3



Driver akan di-install dalam folder,
lalu klik **Next**

4

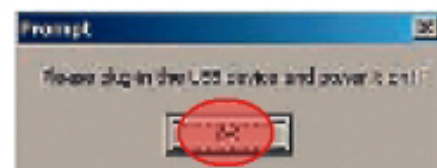


Akan muncul notifikasi, klik **Continue Anyway** (3x)

5

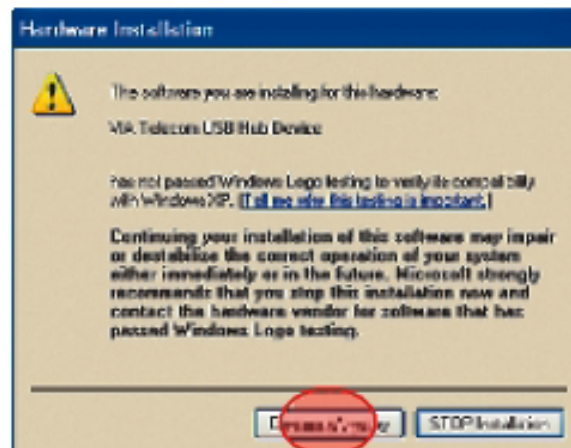


Pasang koneksi kabel USB pada HaPe ke komputer



Lalu klik **OK**

6



Akan muncul notifikasi, klik **Continue Anyway** (3x)



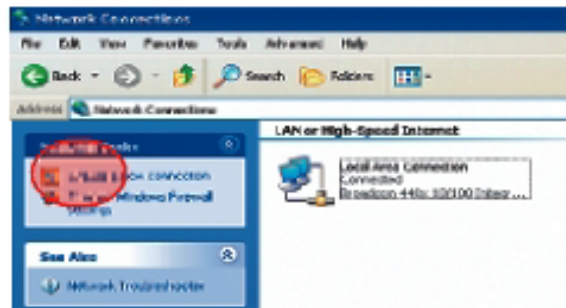
Instalasi driver selesai

Informasi Penting

- ⊗ Untuk menikmati akses data, pelanggan harus berada dalam masa aktif.
- ⊗ Hubungi 881 atau 088 11 22 33 44 untuk keterangan lebih lanjut.
- ⊗ Baca *User Manual* yg diberikan untuk panduan lebih lengkap, hal 79 – 87.

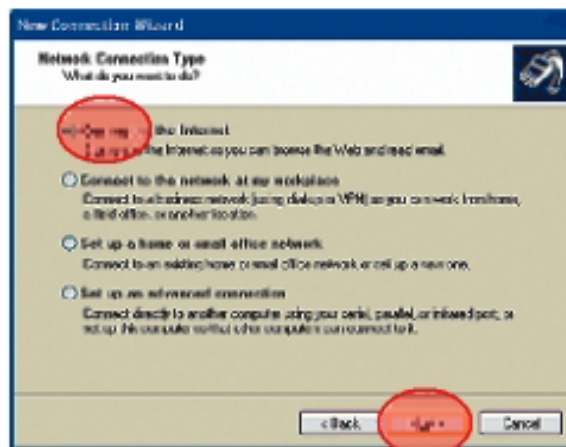
Setting Internet Connection

1



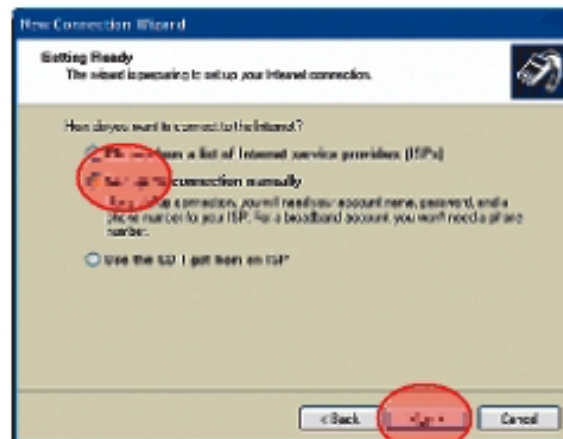
Masuk ke menu **Control Panel**, lalu klik ganda **Network Connection**
Lalu klik **Create a New Connection**, lalu klik **Next**

2



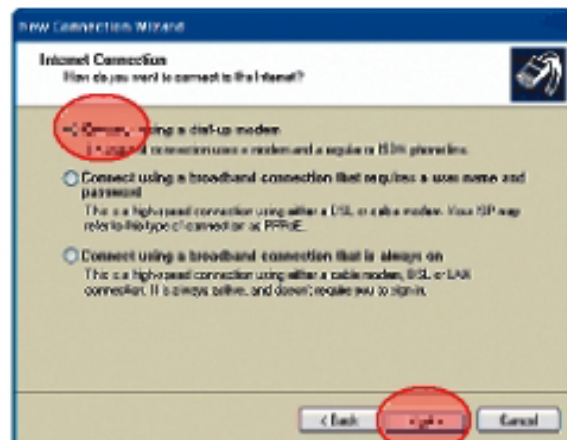
Pilih **Connect to the Internet**, lalu klik **Next**

3



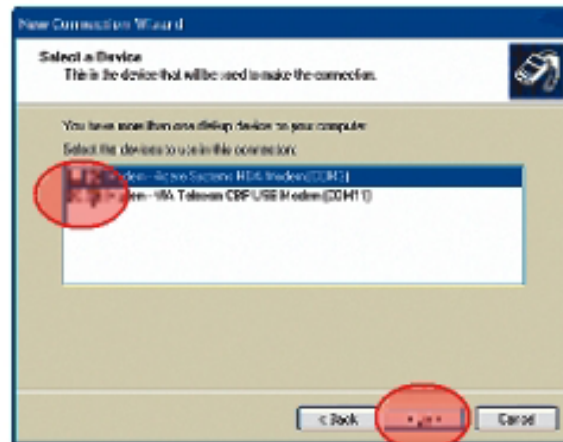
Pilih **Set up my connection manually**
Lalu klik **Next**

4



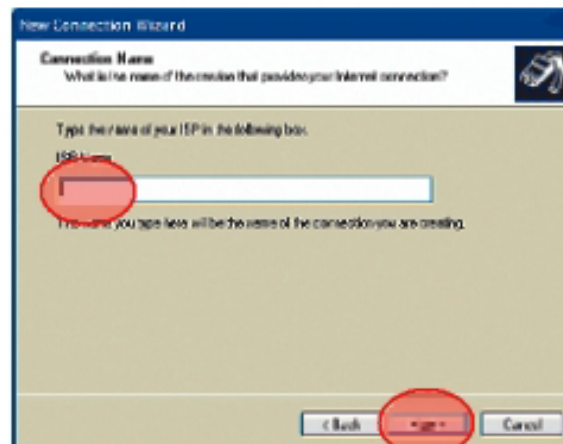
Pilih **Connect using a dial-up modem**
Lalu klik **Next**

5



Pilih **Modem VIA Telecom CBP USB Modem**
Lalu klik **Next**

6



Masukkan <nama bebas>, lalu klik **Next**

7

Phone Number to Dial
What is your ISP's phone number?

Type the phone number below

#777

You might need to dial a "1" or the area code, or both. If you do not see you need the area number, dial the phone number as you'd speak it. If you hear a modem sound, the number dialed is correct.

< Back Next > Cancel

Masukkan **#777**, lalu klik **Next**

8

Internet Account Information
You will need an account name and password to dial in to your Internet account.

Type an ISP account name and password. Your ISP's account information will show in a help page. (If you have forgotten an existing account name or password, contact your ISP)

User name: smart

Password: smart

Confirm password: smart

Use this account's name and password whenever you connect to the Internet from this computer

Make this the default Internet connection

< Back Next > Cancel

Masukkan : **Username : smart**
Password : smart

Klik **Next** dan setting internet connection selesai.
Setelah proses instalasi selesai, HaPe modem bisa digunakan. Jika dialing pertama belum berhasil, silahkan reset HaPe dan memulai proses redial kembali.